

# FlexxPump4 B411A

## Technical data sheet (Item number 210719)

### Product Description

The FlexxPump4 B411A (FP4 B411A) is a highly efficient, microprocessor-controlled single-point-lubricator designed for a need-based direct supply of lubrication points with grease or highly viscous.

Various operating modes are available. In the hour mode (-h-), pause times as well as a number of dispensing strokes can be set. In the emptying time mode (Et), an emptying time of the cartridge can be set in months.

The display of the FP4 B411A enables crucial status monitoring such as level pre-warning, empty level, proper running, back pressure of the lubrication point and error messages.

The pump control detects the empty level of the cartridge.

The FP4 B411A is powered by an internal battery pack. There are lithium and alkaline battery packs to choose from. At low temperatures (e.g., outdoors) the use of lithium battery packs is recommended.

Thanks to battery packs, the FP4 B411A can be used in many areas flexibly where external power is not available.

Pre-filled lubricant cartridges and battery packs as well as other accessories are available.

### Intended Use

Intended use of the FP4 B411A is to supply one lubrication point with grease or highly viscous.

### Technical Data

|                              |        |   |
|------------------------------|--------|---|
| Power supply                 |        | + 6 VDC                                 |
| Number of outlets            |        | 1                                       |
| Operating temperature        | min.   | - 20 °C                                 |
|                              | max.   | + 60 °C                                 |
| Maximum output pressure      |        | 70 bar                                  |
| Protection class             |        | IP 54                                   |
| Volume per dispensing stroke |        | 0,15 ml                                 |
| Lubricants                   | Grease | up to NLGI Class 2                      |
|                              | Oil    | up to 30.000 mm <sup>2</sup> /s (40 °C) |
| Cartridge volume             |        | 400 ml                                  |
| Outlet connection            |        | Connector for hose 6 mm                 |
| Mounting position            |        | any                                     |
| Weight (without cartridge)   |        | 1030 g                                  |

### Important instructions

To ensure trouble-free operation on the FP4 B411A, do not disassemble the unit. To prevent damage to the electronics, only original battery packs must be used.

A detailed description of the operation and control of the FP4 B411A is available in the up-to-date user manual!

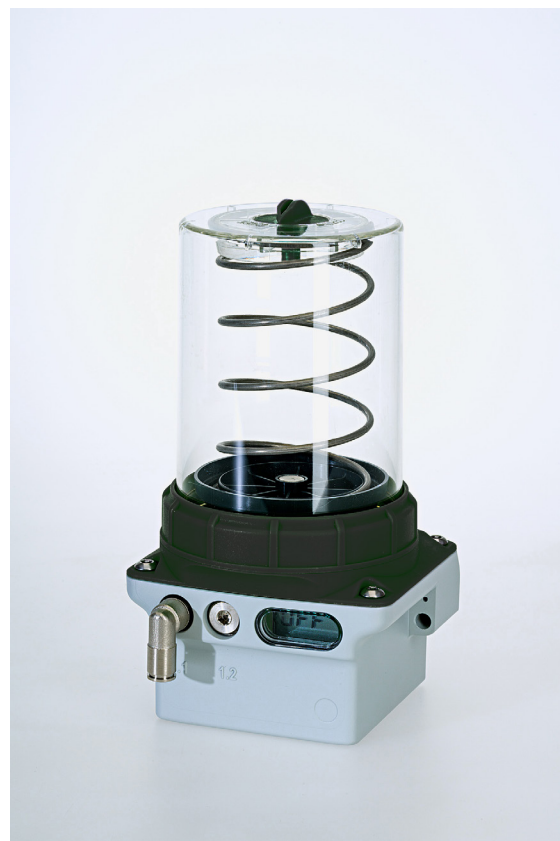


Figure 1: FP4 B411A front view



Figure 2: FP4 B411A with 400 ml

## Operating mode Hour mode (-h-)

The hour mode -h- allows setting the number of dispensing strokes (c) and a pause time (h) between two dispensing cycles in hours. Pause times (h) between 1...240 hour(s) and the number of dispensing strokes (c) between 1...30 can be set. Therefore, a dispensing cycle consists of up to 30 dispensing strokes. The FP4 B411A delivers the set number of dispensing strokes after the pause time has elapsed.

## Operating mode Emptying time (Et)

The emptying time mode Et allows the emptying time of the cartridge to be set in months. Emptying times between 1...36 month(s) can be set. The FP4 B411A calculates a pause time and delivers a dispensing stroke after the pause time has elapsed.

## Default settings Hour mode (-h-)


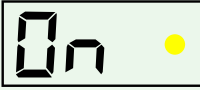

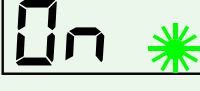
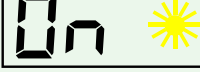
Pause time: h = 3 hours

Number of strokes: c = 1

## Default settings Emptying time (Et)

Emptying time: Et = 6 months

## Display – Meaning of LEDs

| LCD   | Explanation   |
|---|---|
|    | The red LED flashes every 5 seconds if there is an error.   |
|    | The yellow LED lights up when the action area has been touched with the magnetic pen (magnetic pen detected). |
|  | The green LED lights up for approx. 10 ... 18 seconds during a dispensing process.                            |
|  | The green LED flashes every 60 seconds if the FP4 B411A is switched on (ON) and there is no error.            |
|  | The yellow LED flashes every 60 seconds, when the pre-warning limit of the cartridge is reached.              |

## Commands for control

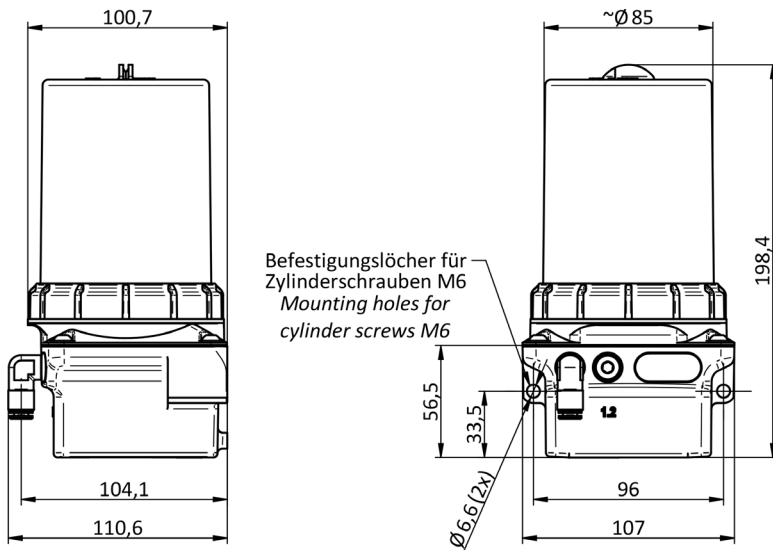
The commands explained below can be called up at any time in operating mode -h- and in operating mode Et.

| Command | Explanation  |
|---------|--|
| INF     | The INF command provides an informative overview of the current settings on the FP4 B411A.         |
| SET     | The SET command allows you to make changes to the operating mode.                                  |
| RUN     | The RUN command enables a single dispensing to be triggered manually on the FP4 B411A.             |
| PRO     | The PRO command allows you to make changes to the settings and dispensing action of the FP4 B411A. |
| FIL     | The FIL command allows you to manually trigger 40 dispensing action of the FP4 B411A.              |

## Error messages on the display

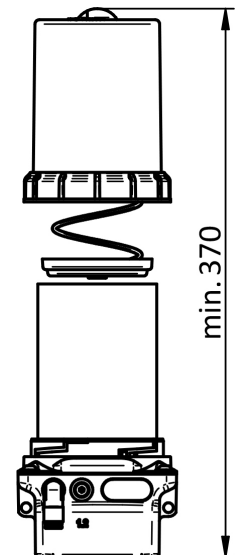
| Error messages | Meaning                          |
|----------------|----------------------------------|
| E1             | Error E1 (empty cartridge)       |
| E2             | Error E2 (overload)              |
| E3             | Error E3 (undervoltage)          |
| E4             | Error E4 (internal device error) |

## Installation dimensions



## Installation

When installing, allow a minimum of 370 mm clearance from the top of the pump in opening direction of the cartridge for easy replacement.



## Materials

|                       |  |
|-----------------------|--|
| Housing of drive unit | Die-cast zinc, powder-coated                                 |
| Transparent top       | Polyamide (impact-resistant, lubricant-resistant, UV-stable) |
| Drive unit cover      | Polyamide 6.6, glass fiber reinforced                        |
| Screws                | Stainless steel A2   |
| Hose connector        | Brass, nickel-plated   |
| Grease cartridge      | Polypropylene, polyethylene                                  |
| Compression plate     | Polyamide 6.6 (impact-resistant, lubricant-resistant)        |
| Compression spring    | Stainless spring steel                                       |

## Similar products

| Description          | Difference   | Item-Nr. |
|----------------------|--|----------|
| FlexxPump4 B411      | Drive unit cover green                               | 210717   |
| FlexxPump4 B411-M12  | Connector for LED cable, green drive unit cover      | 210721   |
| FlexxPump4 B411A-M12 | Connector for LED cable, anthracite drive unit cover | 210723   |
| FlexxPump4 B211      | Cartridge 250 ml, green                              | 210725   |
| FlexxPump4 B211A     | Cartridge 250 ml, anthracite                         | 210727   |

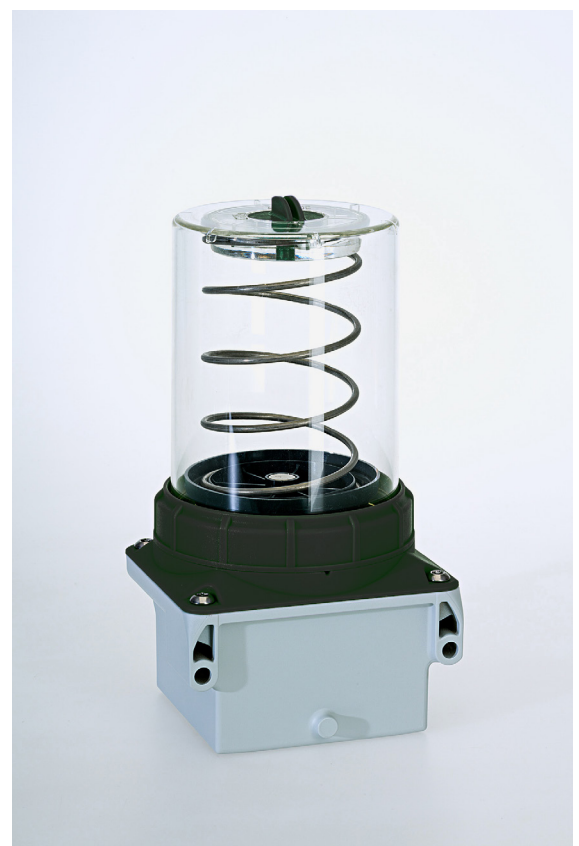


Figure 3: FP4 B411A back

Please visit [www.triboserv.com](http://www.triboserv.com) for available Accessories

The above data and information correspond to the current state of our knowledge and development. However, they do not represent an assurance of properties or a guarantee for the suitability of the products in individual cases. We reserve the right to change the information in this technical data sheet or to make technical changes at any time and without prior notice. The representation on the pictures may differ from the original.

# TriboServ

SpectroLube Inc.  
President: Aykut Ozdemir

2212 Silverbirch Court  
L7M 3H4 Burlington, Ontario  
Canada

Phone: +1 (647) 278-4366  
Mail: [aykut.ozdemir@spectrolube.com](mailto:aykut.ozdemir@spectrolube.com)  
Web: [www.spectrolube.com](http://www.spectrolube.com)



Quality Management

We are certified.

ISO 9001:2015

© – 2021

EN  
Version: 1.0  
Page 3 of 3

FlexxPump4 B411A – Main dimensions & Installation