

TriboServ FlexxPinion

Technical Data Sheet

Product description

The chain lubrication pinions are made up of segmental discs and chain sprockets in a modular design. The individual lubrication segments are made of a special polymer foam. Glass fiber-reinforced polyamide is used for the sprockets. Due to the open-cell structure of the polymer foam, the chain lubrication pinions are able to assume a storage function for the lubricant.

The chain oil used for lubricating the chains passes through the respective axles into the lubrication rollers made of open-cell PU foam, where it is stored and made available in small quantities to the chain links.

Lubricant is delivered to the chain in small, well-dosed quantities. A uniform, thin lubricant film is formed, which has the following advantages:

- Prevention of premature wear and elongation of the chain due to insufficient lubrication.
- Avoidance of overlubrication
- Reduction of the maintenance effort
- Saving energy during operation

Technical data

For chain types		Simplex, Duplex, Triplex DIN 8187-1, DIN 8188-1
Operating temperature	min.	- 30 °C
	max.	+ 140 °C
max. velocity		5 m/s > 2 m/s use spray protection
Material segment discs		Special polymer foam
Material density		240 kg/m ³
Material sprocket		PA6 GF15
Lubricants		all common chain oils
Chemical resistance		very good
Wear characteristics		very good
Paint compatibility		tested and approved
Silicone-free		tested and approved
Hub		plain bearing and sealed

Installation instructions

The chain lubrication pinion is mounted parallel to the running direction of the chain. The plastic pinion automatically sets the optimum distance between the foam rollers and the chain plate for oil transfer.

Intended use

The chain lubrication pinions are designed for lubrication of drive chains.

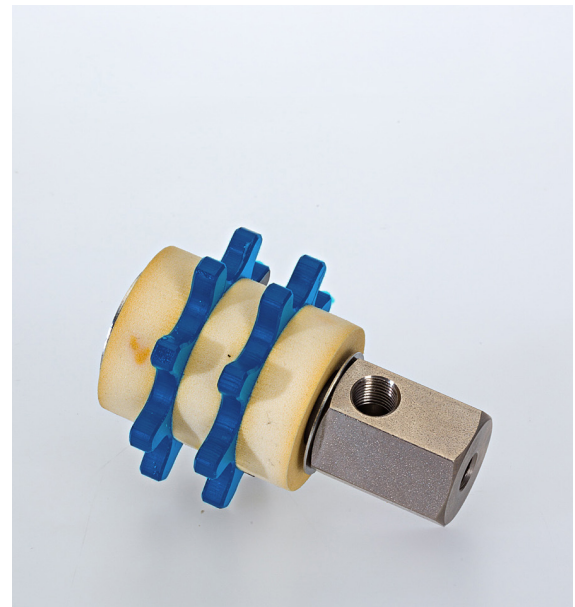


Figure 1: FlexxPinion with angled axle

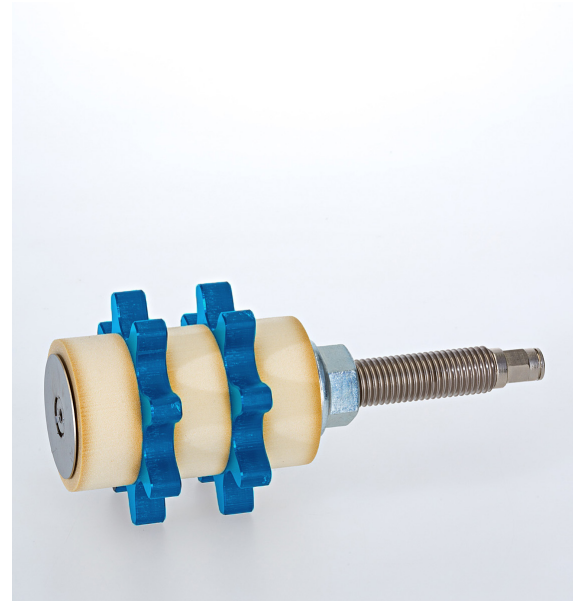


Figure 2: FlexxPinion with straight axle

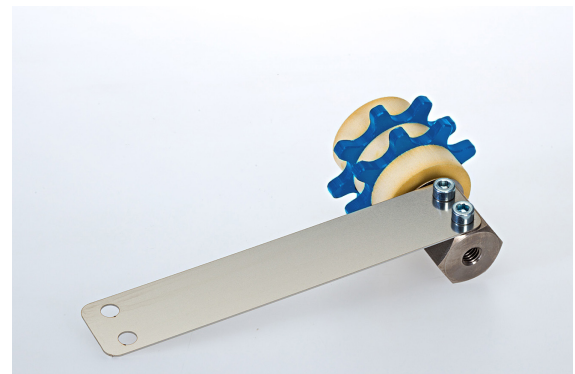
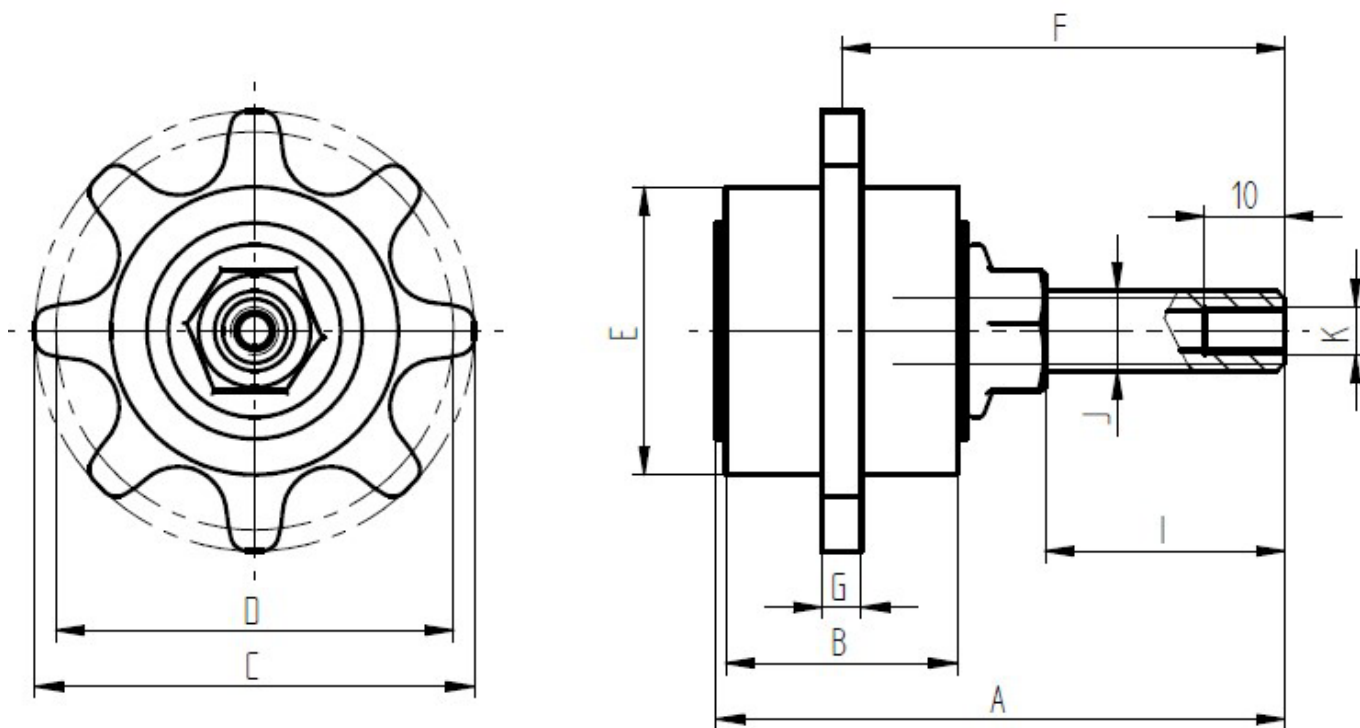


Figure 3: FlexxPinion with angled axle and spring plate

FlexxPinion Simplex – GA (straight axle)



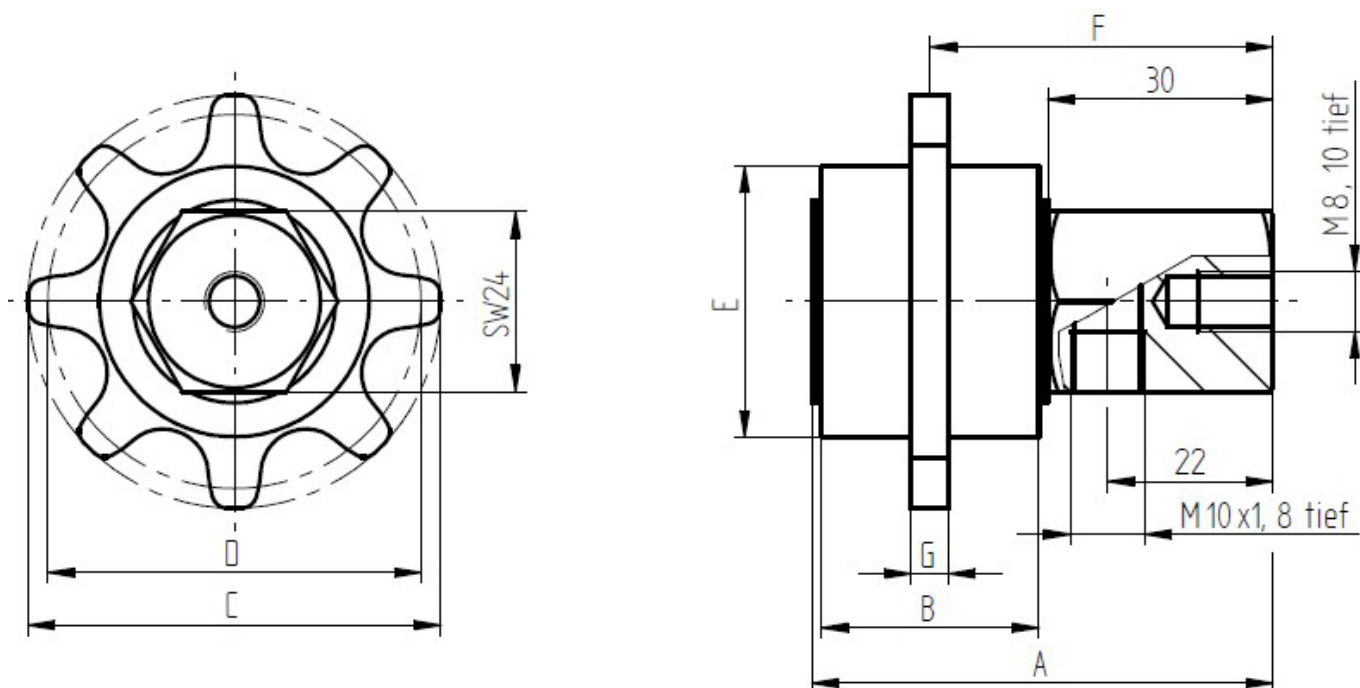
TriboServ Item-Nr.	Short designation	Number of teeth	C [mm]	D [mm]	A [mm]	B [mm]	G [mm]	I [mm]	E [mm]	J	K	F [mm]
700390	Chain lubrication pinion 08 B-1, GA	12	53	49,07	71,2	29	5	30	39	M10	M6	55,5
700391	Chain lubrication pinion 10 B-1, GA	10	55	51,37	71,2	29	5	30	39	M10	M6	55,5
700392	Chain lubrication pinion 12 B-1, GA	8	55	49,78	71,2	29	5	30	36	M10	M6	55,5
700388	Chain lubrication pinion 16 B-1, GA	8	75	66,37	81,2	40	10	30	48	M10	M6	60,5
700383	Chain lubrication pinion 20 B-1, GA	8	90	82,97	116,4	50	10	49,1	59	M16	M10x1	90,7
700403	Chain lubrication pinion 24 B-1, GA	10	138	123,29	126,4	60	20	49,1	93	M16	M10x1	95,7
207926	Chain lubrication pinion 28 B-1, GA	8	140	116,15	146,4	80	20	49,1	81	M16	M10x1	105,7
700741	Chain lubrication pinion 32 B-1, GA	8	150	132,75	146,4	80	20	49,1	93	M16	M10x1	105,7

Important instructions

The chain pinions of the „Simplex“ type can be used for both European type (DIN 8187-1) and American type (DIN 8188-1) chains. The FlexxPinion is identical in each case.

The suffix GA means: chain lubrication pinion mounted on a straight axle.

FlexxPinion Simplex – WA (angled axle)



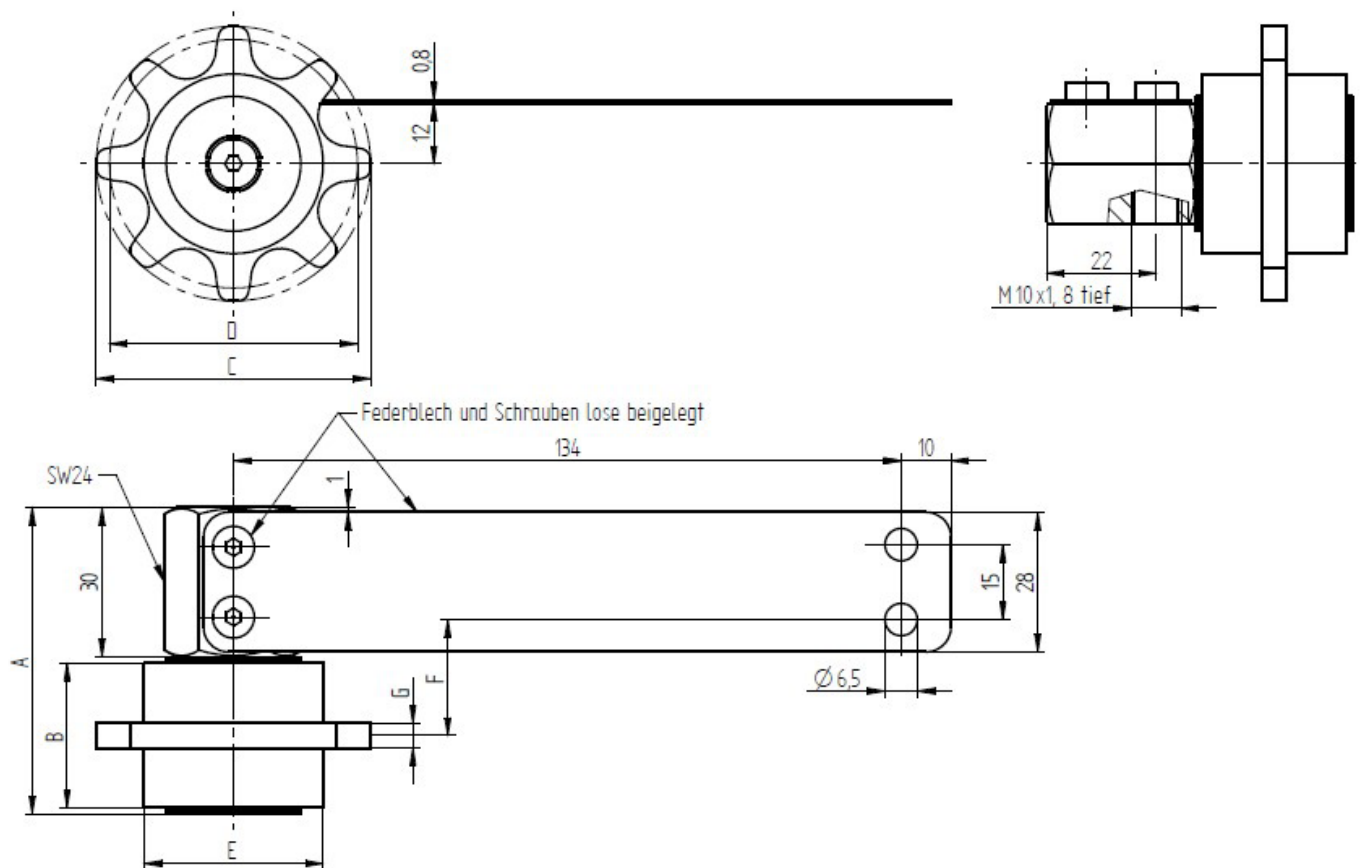
TriboServ Item-Nr.	Short designation	Number of teeth	C [mm]	D [mm]	A [mm]	B [mm]	G [mm]	E [mm]	F [mm]
700629	Chain lubrication pinion 08 B-1, WA	12	53	49,07	61,4	29	5	39	45,7
700833	Chain lubrication pinion 10 B-1, WA	10	55	51,37	61,4	29	5	39	45,7
700620	Chain lubrication pinion 12 B-1, WA	8	55	49,78	61,4	29	5	36	45,7
700879	Chain lubrication pinion 16 B-1, WA	8	75	66,37	71,4	40	10	48	50,7
701107	Chain lubrication pinion 20 B-1, WA	8	90	82,97	81,4	50	10	59	55,7
700812	Chain lubrication pinion 24 B-1, WA	10	138	123,29	91,4	60	20	93	60,7
212464	Chain lubrication pinion 28 B-1, WA	8	140	116,15	142,1	80	20	81	70,7
701110	Chain lubrication pinion 32 B-1, WA	8	150	132,75	111,4	80	20	93	70,7

Important instructions

The chain pinions of the „Simplex“ type can be used for both European type (DIN 8187-1) and American type (DIN 8188-1) chains. The FlexxPinion is identical in each case.

The suffix WA means: chain lubrication pinion mounted on an angled axle.

FlexxPinion Simplex – SET (angled axle and spring plate)



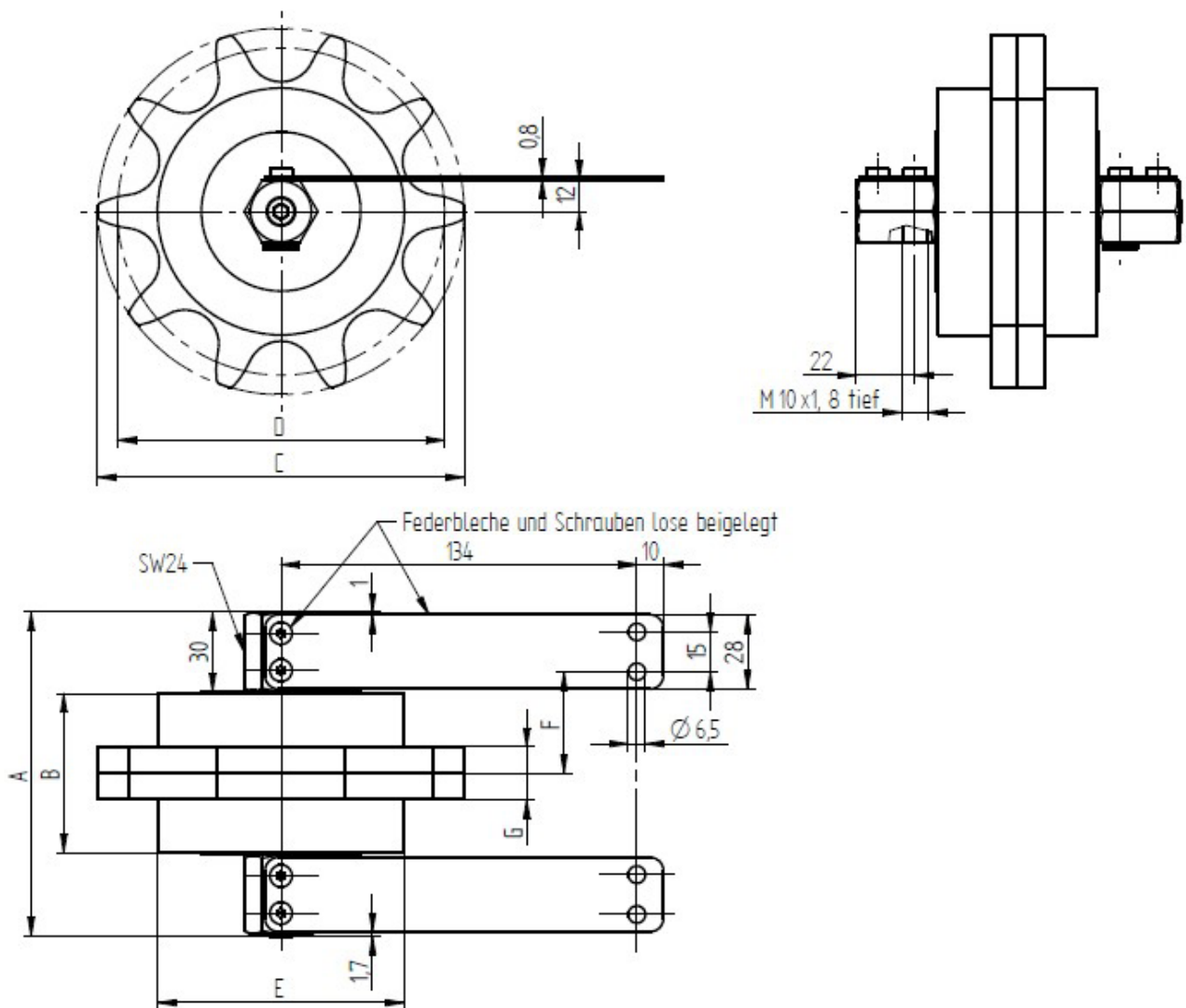
TriboServ Item-Nr.	Short designation	Number of teeth	C [mm]	D [mm]	E [mm]	A [mm]	B [mm]	G [mm]	F [mm]
211338	SET Chain lubrication pinion 08 B-1,	12	53	39	49,07	61,4	29	5	23,2
211339	SET Chain lubrication pinion 10 B-1,	10	55	39	51,37	61,4	29	5	23,2
211340	SET Chain lubrication pinion 12 B-1,	8	55	36	49,78	61,4	29	5	23,2
211341	SET Chain lubrication pinion 16 B-1,	8	75	48	66,37	71,4	40	10	28,2
211342	SET Chain lubrication pinion 20 B-1,	8	90	59	82,97	81,4	50	10	33,2

Important instructions

The chain pinions of the „Simplex“ type can be used for both European type (DIN 8187-1) and American type (DIN 8188-1) chains. The FlexxPinion is identical in each case.

The prefix SET means: chain lubrication pinion mounted on an angled axle with spring plate.

FlexxPinion Simplex – SET (angled axle and double spring plate)



TriboServ Item-Nr.	Short designation	Number of teeth	C [mm]	D [mm]	E [mm]	A [mm]	B [mm]	G [mm]	F [mm]
211343	SET Chain lubrication pinion 24 B-1, 2FB	10	138	93	123,29	122,1	60	20	38,2
212465	SET Chain lubrication pinion 28 B-1, 2FB	8	140	81	116,15	142,1	80	20	48,2
212466	SET Chain lubrication pinion 32 B-1, 2FB	8	150	93	132,75	142,1	80	20	48,2

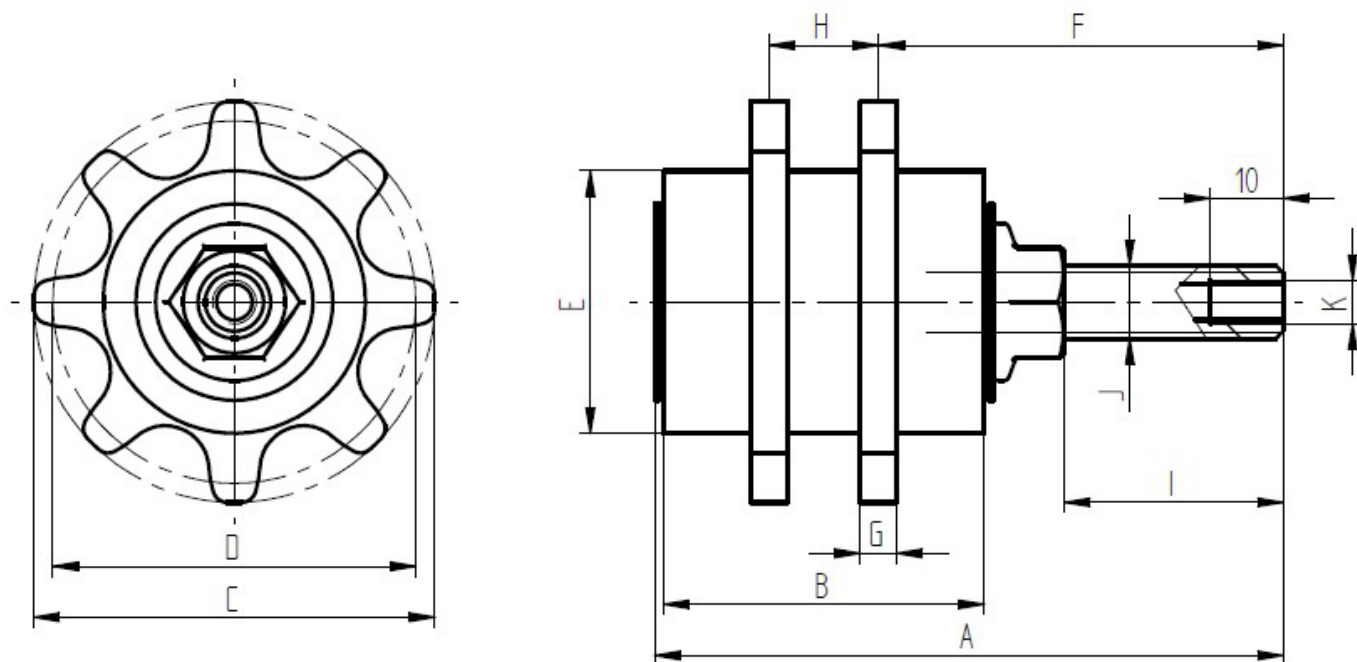
Important instructions

The chain pinions of the „Simplex“ type can be used for both European type (DIN 8187-1) and American type (DIN 8188-1) chains. The FlexxPinion is identical in each case.

The prefix SET means: chain lubrication pinion mounted on an angled axle with spring plate.

The suffix 2FB means: one spring plate each left and right on angled axle.

FlexxPinion Duplex – GA (straight axle)



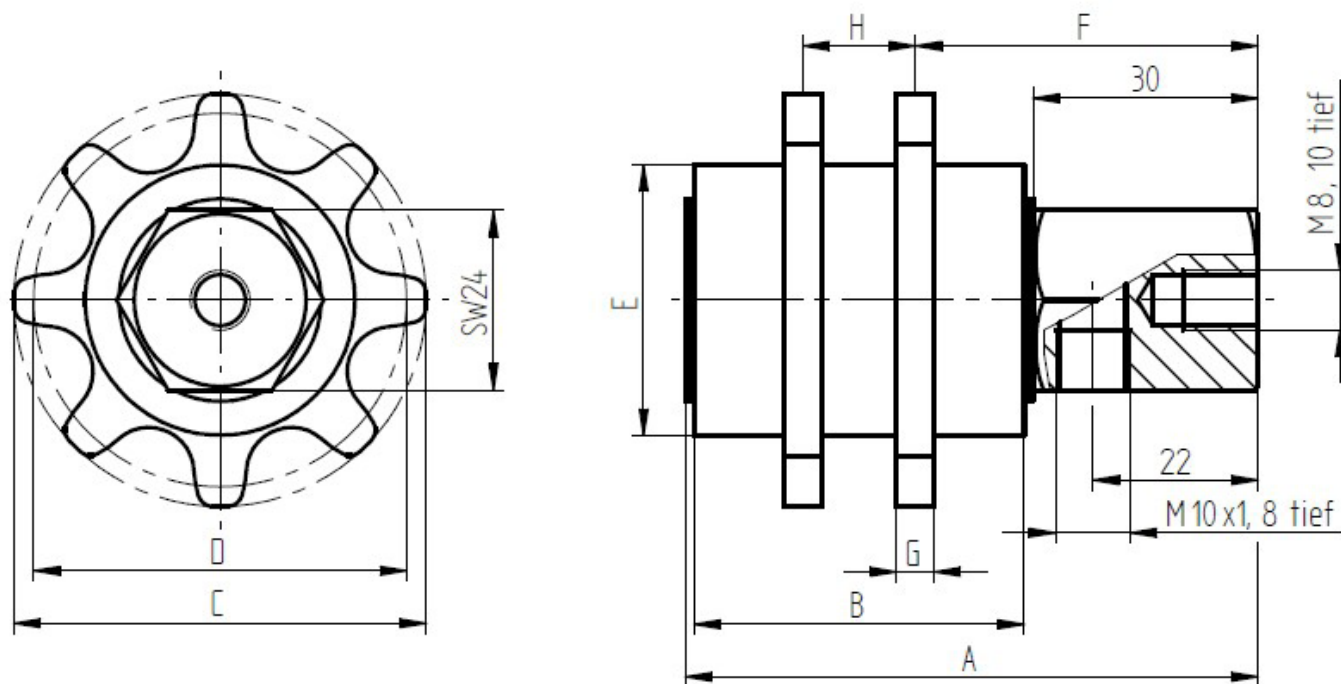
TriboServ Item-Nr.	Short designation	Number of teeth	C [mm]	D [mm]	A [mm]	B [mm]	G [mm]	I [mm]	E [mm]	J	K	H [mm]	F [mm]
700442	Chain lubrication pinion 08 B-2, GA	12	53	49,07	81,2	40	5	30	39	M10	M6	15	53
700679	Chain lubrication pinion 10 B-2, GA	10	55	51,37	81,2	40	5	30	39	M10	M6	15	53
700690	Chain lubrication pinion 12 B-2, GA	8	55	49,78	86,2	44	5	30	36	M10	M6	15	55,5
700387	Chain lubrication pinion 16 B-2, GA	8	75	66,37	146,4	80	10	49,1	48	M16	M10x1	30	90,7
701108	Chain lubrication pinion 20 B-2, GA	8	90	82,97	146,4	80	10	49,1	59	M16	M10x1	30	90,7
700286	Chain lubrication pinion 24 B-2, GA	10	138	123,29	166,4	100	10	49,1	93	M16	M10x1	50	90,7
212463	Chain lubrication pinion 28 B-2, GA	8	140	116,15	196,4	130	10	49,1	81	M16	M10x1	70	95,7
212470	Kettenschmierritzel 32 B-2, GA	8	150	132,75	196,4	130	10	49,1	93	M16	M10x1	70	95,7

Important instructions

The chain pinions of the „Simplex“ type can be used for both European type (DIN 8187-1) and American type (DIN 8188-1) chains. The FlexxPinion is identical in each case.

The suffix GA means: chain lubrication pinion mounted on a straight axle.

FlexxPinion Duplex – WA (angled axle)



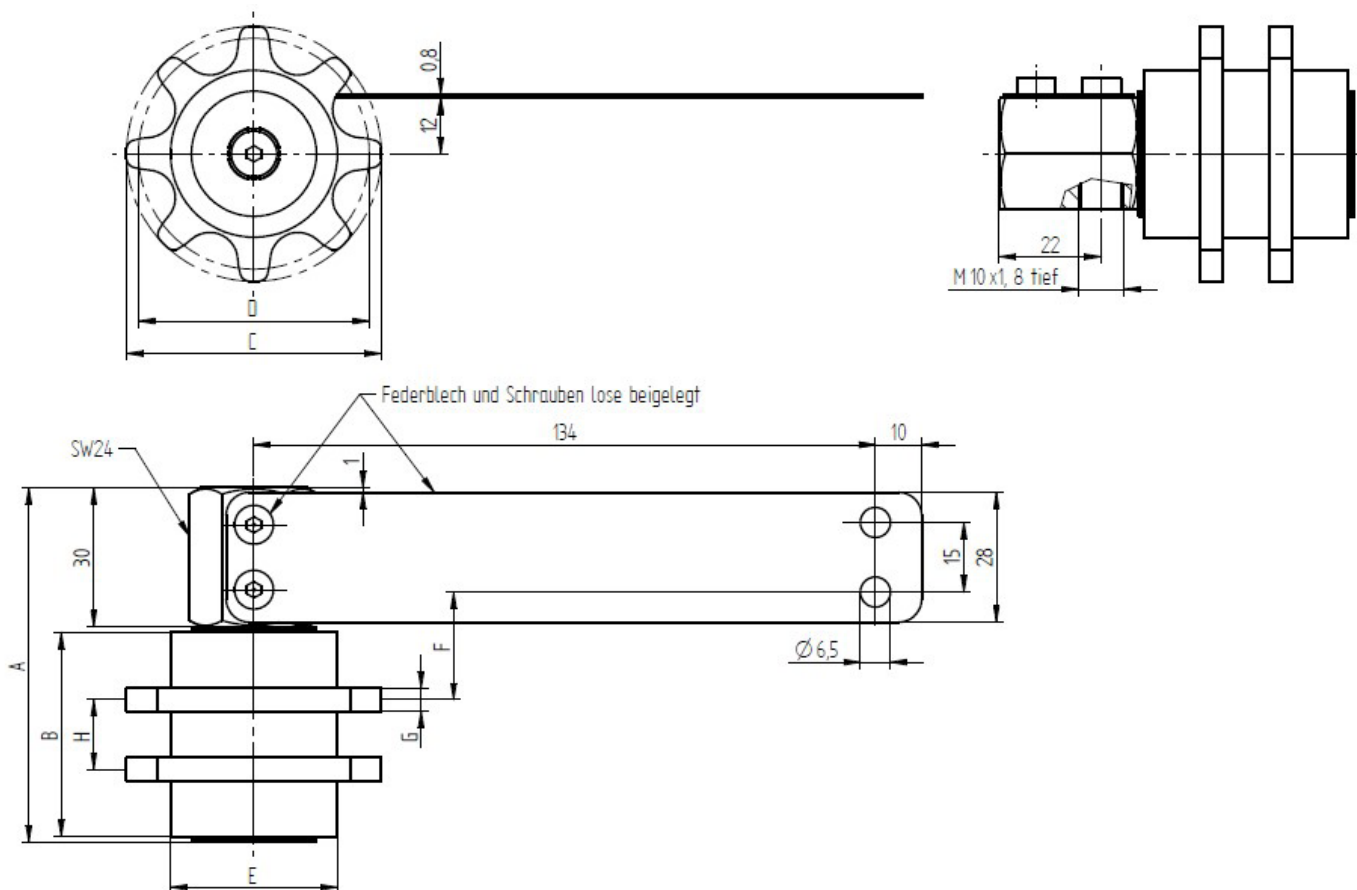
TriboServ Item-Nr.	Short designation	Number of teeth	C [mm]	D [mm]	A [mm]	B [mm]	G [mm]	E [mm]	H [mm]	F [mm]
700858	Chain lubrication pinion 08 B-2, WA	12	53	49,07	71,4	40	5	39	15	43,2
700251	Chain lubrication pinion 10 B-2, WA	10	55	51,37	71,4	40	5	39	15	43,2
701106	Chain lubrication pinion 12 B-2, WA	8	55	49,78	76,4	44	5	36	15	45,7
700878	Chain lubrication pinion 16 B-2, WA	8	75	66,37	111,4	80	10	48	30	55,7
700880	Chain lubrication pinion 20 B-2, WA	8	90	82,97	111,4	80	10	59	30	55,7
701109	Chain lubrication pinion 24 B-2, WA	10	138	123,29	131,4	100	10	93	30	50,7

Important instructions

The chain pinions of the „Simplex“ type can be used for both European type (DIN 8187-1) and American type (DIN 8188-1) chains. The FlexxPinion is identical in each case.

The suffix WA means: chain lubrication pinion mounted on an angled axle.

FlexxPinion Duplex – SET (angled axle and spring plate)



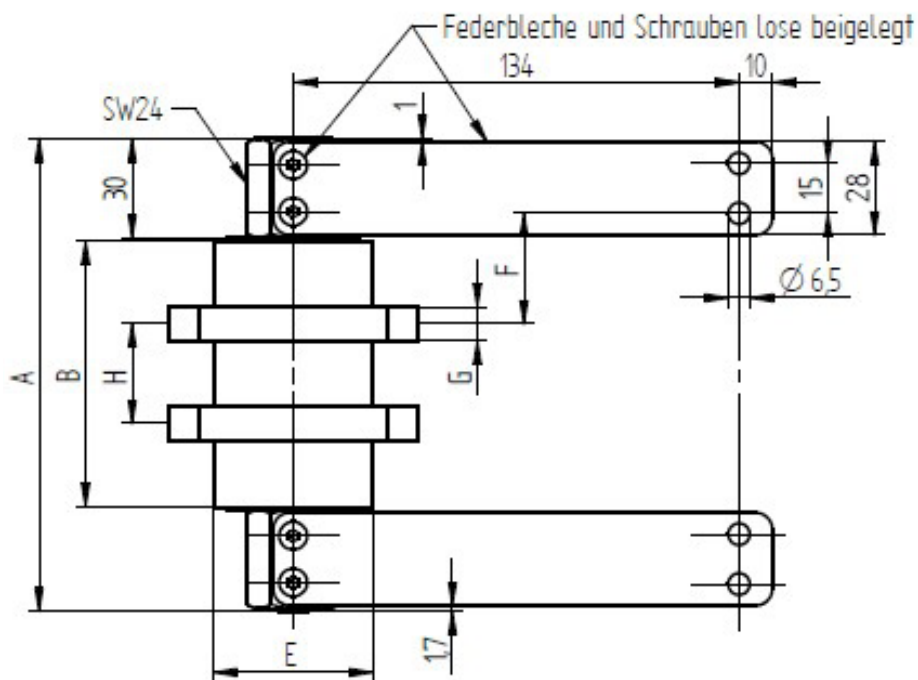
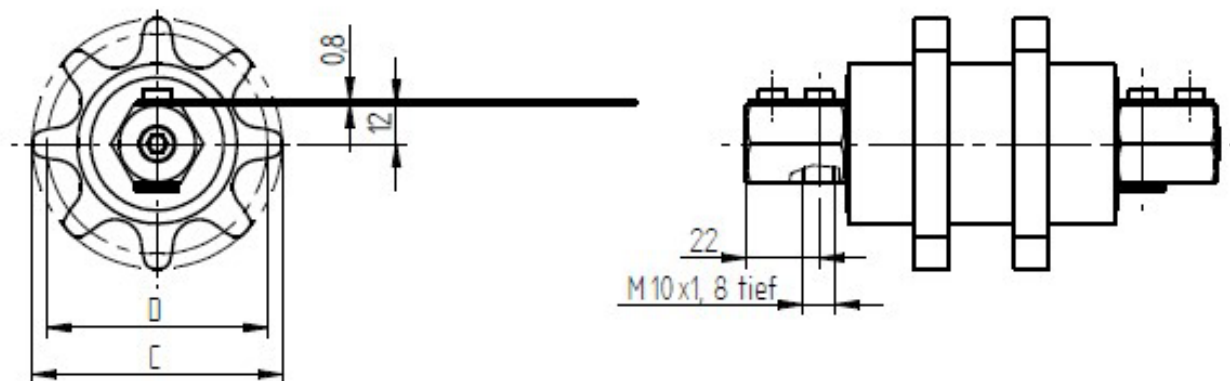
TriboServ Item-Nr.	Short designation	Number of teeth	C [mm]	D [mm]	E [mm]	A [mm]	B [mm]	H [mm]	G [mm]	F [mm]
211355	SET Chain lubrication pinion 08 B-2	12	53	49,07	39	71,4	40	15	5	20,7
211356	SET Chain lubrication pinion 10 B-2	10	55	51,37	39	71,4	40	15	5	20,7
211357	SET Chain lubrication pinion 12 B-2	8	55	49,78	36	76,4	44	15	5	23,2

Important instructions

The chain pinions of the „Simplex“ type can be used for both European type (DIN 8187-1) and American type (DIN 8188-1) chains. The FlexxPinion is identical in each case.

The prefix SET means: chain lubrication pinion mounted on an angled axle with spring plate.

FlexxPinion Duplex – SET (angled axle and double spring plate)



TriboServ Item-Nr.	Short designation	Number of teeth	C [mm]	D [mm]	E [mm]	A [mm]	B [mm]	H [mm]	G [mm]	F [mm]
211358	SET Chain lubrication pinion 16 B-2, 2FB	8	75	66,37	48	142,1	80	30	10	33,2
212467	SET Chain lubrication pinion 20 B-2, 2FB	8	90	82,97	59	142,1	80	30	10	33,2
212468	SET Chain lubrication pinion 24 B-2, 2FB	10	138	123,29	93	162,1	100	50	10	33,2
212469	SET Chain lubrication pinion 28 B-2, 2FB	8	140	116,15	81	192,1	130	70	10	38,2
212471	SET Chain lubrication pinion 32 B-2, 2FB	8	150	132,75	93	192,1	130	70	10	38,2

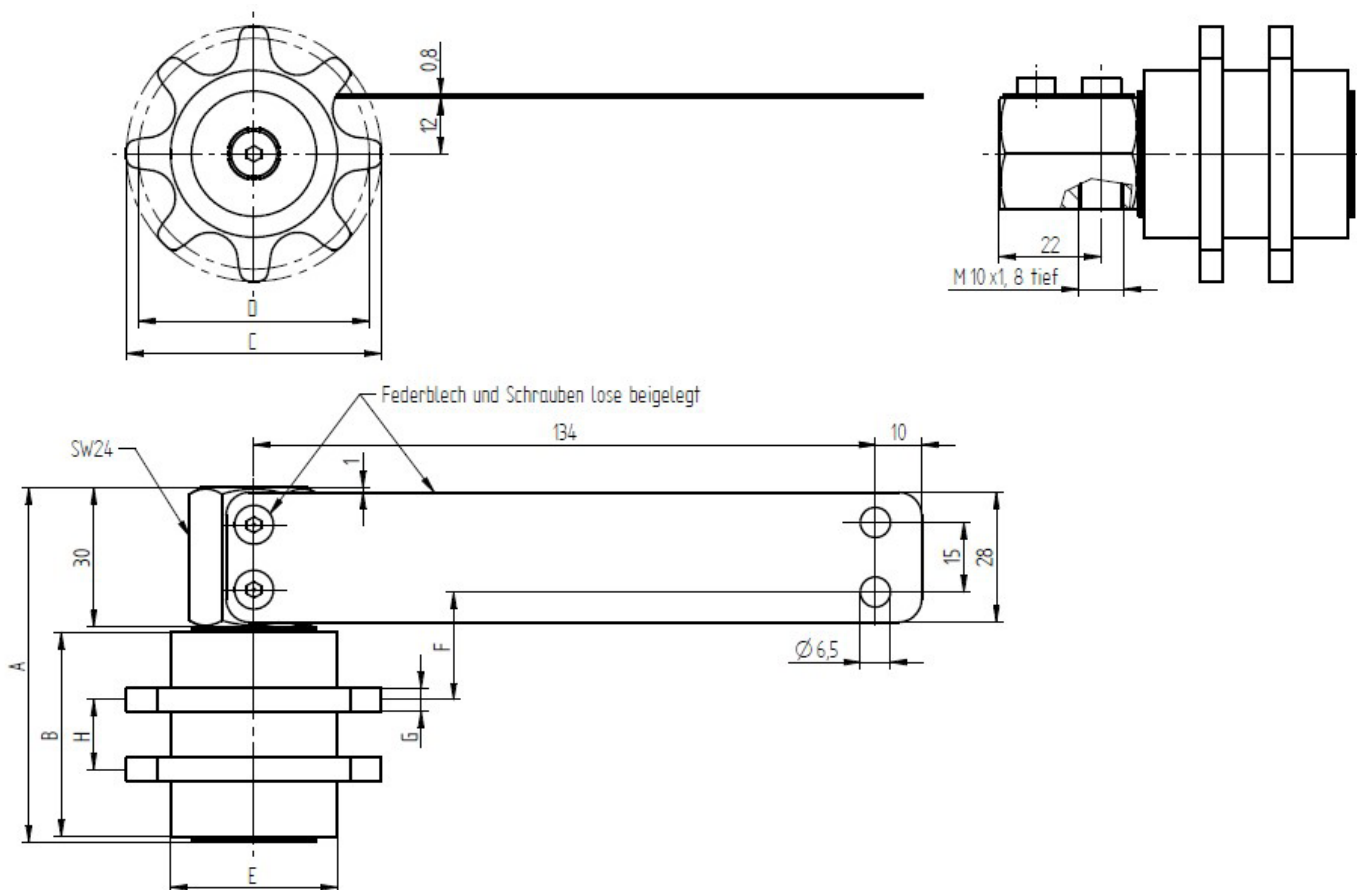
Important instructions

The chain pinions of the „Simplex“ type can be used for both European type (DIN 8187-1) and American type (DIN 8188-1) chains. The FlexxPinion is identical in each case.

The prefix SET means: chain lubrication pinion mounted on an angled axle with spring plate.

The suffix 2FB means: one spring plate each left and right on angled axle.

FlexxPinion Triplex – SET (angled axle and spring plate)



TriboServ Item-Nr.	Short designation	Number of teeth	C [mm]	D [mm]	E [mm]	A [mm]	B [mm]	H [mm]	G [mm]	F [mm]
212472	SET Chain lubrication pinion 08 B-3	12	53	49,07	39	85,4	54	29	5	43,2
212477	SET Chain lubrication pinion 10 B-3	10	55	51,37	39	91,4	59	30	5	23,2

Important instructions

The chain pinions of the „Simplex“ type can be used for both European type (DIN 8187-1) and American type (DIN 8188-1) chains. The FlexxPinion is identical in each case.

The Triplex chain lubrication pinion versions are only available with angled axles and spring plate as mounting options.

The prefix SET means: chain lubrication pinion mounted on an angled axle with spring plate.

Important instructions

The chain pinions of the „Simplex“ type can be used for both European type (DIN 8187-1) and American type (DIN 8188-1) chains. The FlexxPinion is identical in each case.

The Triplex chain lubrication pinion versions are only available with angled axles and spring plate as mounting options.

The prefix SET means: chain lubrication pinion mounted on an angled axle with spring plate.

The suffix 2FB means: one spring plate each left and right on angled axle.

Alternative mounting options on request.

Material

FlexxPinion mounting axle	Steel, nickel-plated
Rectangular cavity	Steel, nickel-plated
Threaded bolt	Steel, nickel-plated
Discs	V2A
Screws	V2A
Spring plate	V2A

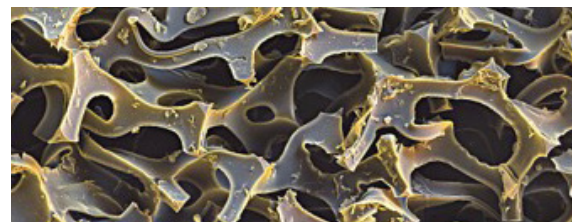


Figure 4: Microscope image special polymer foam

Special designs

Beyond the standard offer, TriboServ provides special chain lubrication pinions according to your requirements.

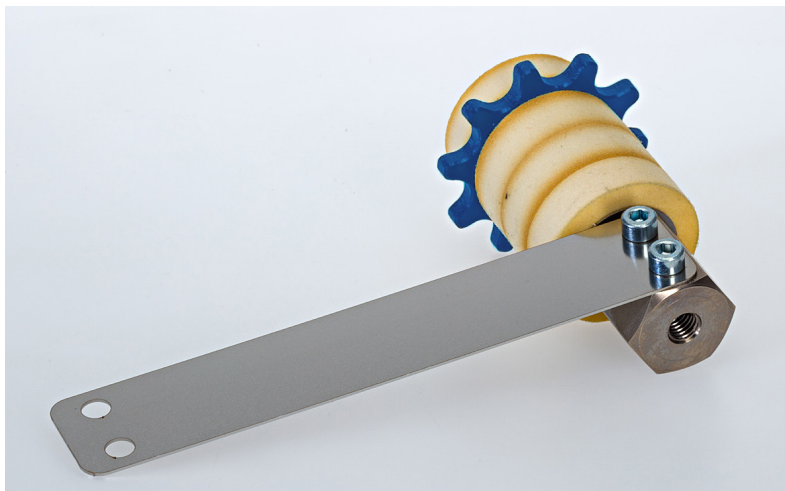


Figure 5: Special chain lubrication pinion with angled axle and spring plate



Figure 6: Special chain lubrication pinion in steel design

Please visit www.triboserv.com for available Accessories

The above data and information correspond to the current state of our knowledge and development. However, they do not represent an assurance of properties or a guarantee for the suitability of the products in individual cases. We reserve the right to change the information in this technical data sheet or to make technical changes at any time and without prior notice. The representation on the pictures may differ from the original.

TriboServ

SpectroLube Inc.
President: Aykut Ozdemir

2212 Silverbirch Court
L7M 3H4 Burlington, Ontario
Canada

Phone: +1 (647) 278-4366
Mail: aykut.ozdemir@spectrolube.com
Web: www.spectrolube.com



Quality Management

We are certified.

ISO 9001:2015

© – 2021

EN
Version: 1.0
Page 12 of 12